

SPECIFICATIONS & CAPACITIES

MODELS	10530	10740	10950	101160	101375	12-20-100	12-24-125	12-28-150
Heat Section Holding Capacity, bu (m ³)	331 (11.7)	442 (15.5)	596 (20.9)	740 (25.9)	853 (29.9)	1,024 (36.0)	1,293 (45.4)	1,535 (53.9)
Cool Section Holding Capacity, bu (m ³)	111 (3.9)	176 (6.2)	199 (7.0)	232 (8.1)	296 (10.4)	391 (13.7)	444 (15.6)	525 (18.4)
Wet Hopper Holding Capacity, bu (m ³)	140 (4.9)	140 (4.9)	140 (4.9)	140 (4.9)	140 (4.9)	335 (11.8)	335 (11.8)	335 (11.8)
Total Holding Capacity, bu (m ³)	582 (20.5)	758 (26.5)	935 (32.7)	1,112 (38.9)	1,289 (45.1)	1,750 (61.5)	2,072 (72.8)	2,395 (84.1)
Total Height, (m) ¹	34'-4" (10.5)	42'-5" (12.9)	50'-6" (15.4)	58'-6" (17.8)	66'-7" (20.3)	74'-11" (22.8)	87'-0" (26.5)	99'-2" (30.2)
Fill Height, (m) ¹	32'-4" (9.9)	40'-5" (12.3)	48'-5" (14.8)	56'-6" (17.2)	64'-7" (19.7)	71'-11" (21.9)	84'-0" (25.6)	96'-2" (29.3)
Diameter, (m)	9'-9" (3.0)	9'-9" (3.0)	9'-9" (3.0)	9'-9" (3.0)	9'-9" (3.0)	11'-8" (3.6)	11'-8" (3.6)	11'-8" (3.6)
Grain Column Thickness, (cm)	12" (30.5)	12" (30.5)	12" (30.5)	12" (30.5)	12" (30.5)	12" (30.5)	12" (30.5)	12" (30.5)
Number of External Walkways	1	1	2	3	3	3	4	5
Grain Exchanger	N/A	N/A	Optional	Optional	Optional	Optional	Optional	Optional
Average Operating Burner Capacity, MMBTU/hr (kW thermal) ²	3.37 (988)	4.41 (1,289)	5.96 (1,742)	7.26 (2,122)	8.16 (2,391)	11.70 (3,429)	14.20 (4,162)	16.50 (4,836)
Max Operating Burner Capacity, MMBTU/hr (kW thermal) ³	4.49 (1,316)	5.88 (1,718)	7.95 (2,323)	9.68 (2,829)	10.89 (3,183)	15.70 (4,601)	18.90 (5,539)	22.10 (6,477)
Max Nameplate Burner Capacity, MMBTU/hr (kW thermal)	9.00 (2,638)	10.00 (2,931)	11.00 (3,224)	12.50 (3,663)	12.50 (3,663)	25.00 (7,327)	27.00 (7,913)	27.00 (7,913)
Electrical Load, Amps 230V / 460V (380V)	106 / 53 (64)	136 / 68 (82)	166 / 83 (100)	190 / 95 (116)	228 / 114 (140)	296 / 148 (180)	366 / 183 (221)	444 / 222 (268)
Fan Airflow, CFM (m ³ /hr)	26,700 (45,363)	35,100 (59,636)	47,200 (80,194)	59,500 (101,092)	64,700 (109,927)	90,000 (152,912)	109,000 (185,193)	128,000 (217,474)
Number of Fans	1	1	1	1	1	1	1	1
Fan Motor Size, HP (kW)	30 (22.4)	40 (29.8)	50 (37.3)	60 (44.7)	75 (55.9)	100 (74.6)	125 (93.2)	150 (112)
Capacity, Shelled Corn, 20%-15% ⁴ wet bushels/hr (wet metric tonnes/hr) ⁵ dry bushels/hr (dry metric tonnes/hr) ⁵	up to 745 (18.4) 700 (16.3)	up to 990 (24.5) 930 (21.7)	up to 1,320 (32.7) 1,240 (28.9)	up to 1,595 (39.5) 1,500 (35.0)	up to 1,810 (44.8) 1,700 (39.6)	up to 2,125 (52.6) 2,000 (46.6)	up to 2,550 (63.1) 2,400 (55.9)	up to 2,980 (73.8) 2,800 (65.3)
Capacity, Shelled Corn, 25%-15% ⁴ wet bushels/hr (wet metric tonnes/hr) ⁵ dry bushels/hr (dry metric tonnes/hr) ⁵	up to 455 (12.0) 400 (9.3)	up to 615 (16.2) 540 (12.6)	up to 820 (21.6) 720 (16.8)	up to 990 (26.1) 870 (20.3)	up to 1,135 (29.9) 1,000 (23.3)	up to 1,315 (34.7) 1,160 (27.0)	up to 1,575 (41.6) 1,390 (32.4)	up to 1,840 (48.5) 1,620 (37.8)

¹Grain exchanger option adds 3'-0" (.91m) to models 10950 - 101375 and 4'-0" (1.22m) to models 12-20-100 - 12-28-150.

²Average burner capacities based on 150 deg F (83 deg C) temperature rise and 20% reclamation efficiency.

³Max burner capacities based on 200 deg F (111 deg C) temperature rise and 20% reclamation efficiency.

⁴The information contained in this brochure is intended to assist our customers in selecting the grain drying system that they believe best meets their unique preferences and needs. The performance figures and capacities presented in this brochure are only estimates, based on calculated simulations, and do not constitute express or implied warranties. Many factors influence the grain drying process, including ambient temperature, relative humidity, grain variety, grain quality, grain temperature, dryer operating temperatures, dryer add-ons and accessories, and dryer condition, maintenance and operation.

⁵Capacities in metric tonnes/hr are based on a grain bulk density of: 749 kg/m³ (wet @ 25% moisture), 703 kg/m³ (wet @ 20% moisture), 661 kg/m³ (dry @ 15% moisture).



At Mathews Company, we continuously strive to improve our products. Accordingly, changes may occur that are not reflected in the specifications and capacities contained in this brochure.

Your Authorized M-C Dealer is:

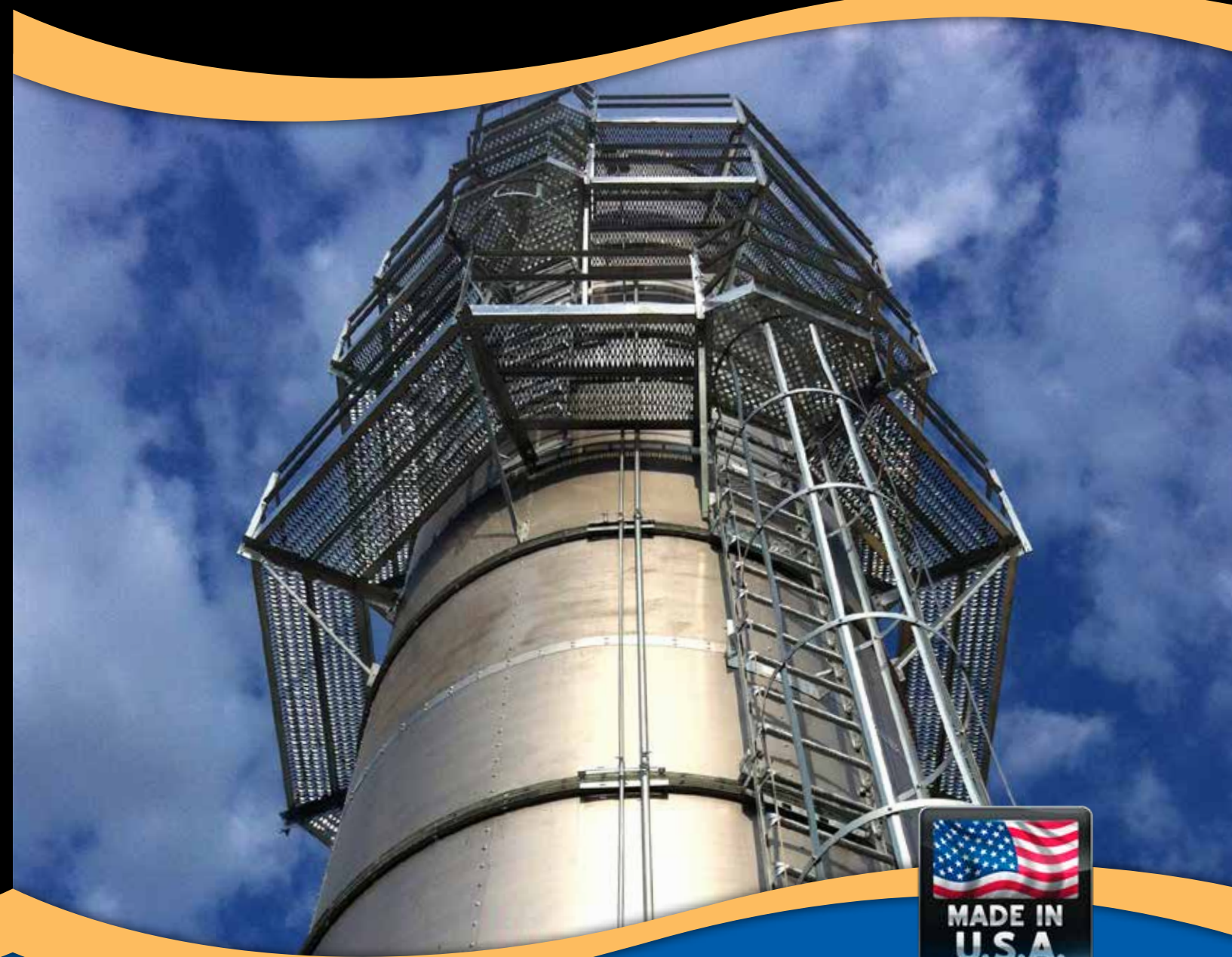


Mathews Company
www.mathewscountry.com

Crystal Lake, IL
phone: 1-815-459-2210
fax: 1-815-459-5889
email: mcsales@mathewscountry.com



MODULAR TOWER SERIES TOWER DRYERS



GRAIN DRYER SPECIALISTS



MODULAR TOWER SERIES

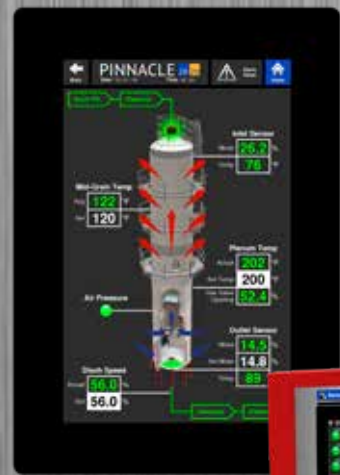
Innovation • Expertise • Quality

PINNACLE 20|20

CONTROL SYSTEM

Experience the Ease of Dual Touch Screens with Pinnacle 20|20

- PLC-Based Dryer Control System
- Dual 10" HD Touchscreens
- Easy User Interface
- 24 VDC Control Safety Circuit



Quick Glance

- Easier to Navigate
- Bright, Easy to See Graphics
- More Info Available within 2 Screen Touches Away
- Better Diagnostics

MANUAL CONTROL SYSTEM

Want the simplest system available? M-C offers a manual control system without all the bells and whistles of Pinnacle 20|20. Ask your dealer for more information.



Control Your Dryer from Anywhere in the World!



Made Easy

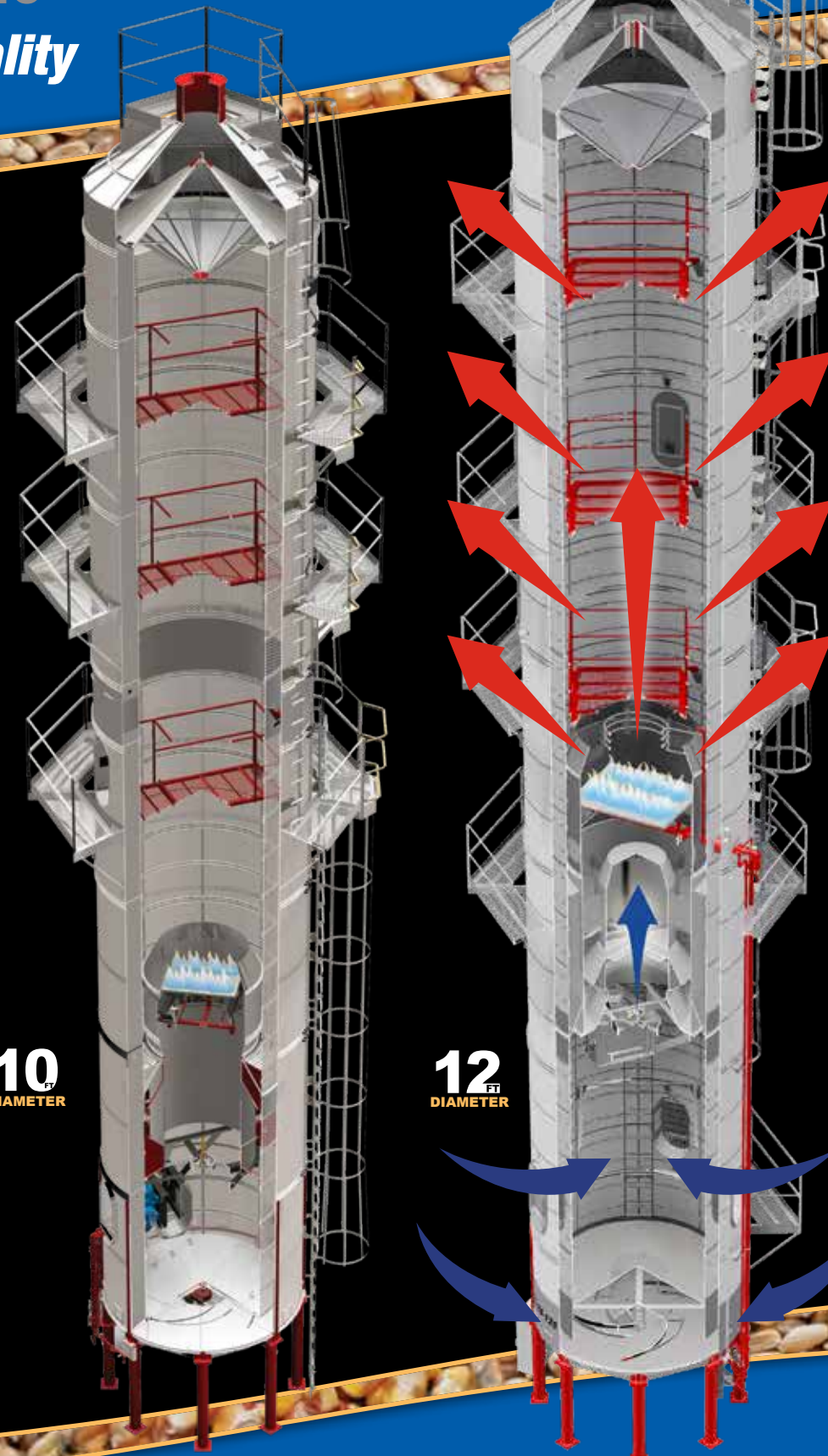
M-C Trax setup does not require any network configuration or software. The only requirement is that a wired internet connection is available at the dryer.

First Year is Free!

After the first free year, if you are not happy with M-C Trax for any reason, cancel your subscription moving forward free of charge.

10 DIAMETER

12 DIAMETER



Read what customers are saying >>>

I'm really excited about the new larger fan size [Model 12-24-125]. I don't doubt that this machine is going to keep me feeding it to keep up with its output.

- Kevin J., IA

Vacuum Cool Energy Savings

Vacuum cooling is key to the popularity and success of M-C Tower Series dryers. Reclaiming heated air from cooling grain results in less fuel usage and significant dollar savings. After blending the ambient air drawn from outside, the pre-heated air is returned to the blower, lowering energy consumption and producing maximum efficiency.

M-C Tower Series dryers give maximum capacity while taking up less valuable square footage in your grain setup. Easy to operate, clean and quiet, reliable and efficient...M-C Tower Series dryers provide the best means to lower input costs and add profit to your harvest.

Long-Lasting Screen Construction – Stainless steel screens are standard on 12' models and optional on 10' models.

Grain Exchangers are an available option to equalize moisture and temperature in the grain column.

Inverted Cone – A proprietary design which promotes uniform heat distribution and dryer cleanliness ensuring optimal dryer operation.

High Efficiency Burner – Stainless steel construction with cast aluminum manifold features high efficiency, low emission operation.

Self-Cleaning Sloped Floor promotes dryer cleanliness.

Quiet Drying – Commercial-Grade Inline Centrifugal Blower reduces noise, while increasing efficiency.

Sealed Cooling Floor prevents particulate matter from entering the drying process for a cleaner dryer operation.

AccuDry™ Moisture-Based Control is an available option featuring DryerMaster™ technology which measures incoming and discharged grain moisture to control the discharge rate of the dryer, ensuring precise and uniform grain moisture.

Intuitive Dual 10" HD Touchscreen Control – Pinnacle 20|20 provides two touch screens for ultimate control, customization, and a built-in backup.

High Voltage Cabinet with main power disconnect protects motor starters, thermal overloads and electrical components from weather and dirt.

The 101160 is the quietest dryer I have been around. You can talk on your cell phone right next to the dryer it's so quiet. Once calibrated, the AccuDry controls took over and performed flawlessly for me. The controller was very easy to use; I had no problem navigating thru the touch screen. But, by far, the best feature of my new dryer was the customer support... With local dealer, I can pick up the phone and get all my questions answered right away.

- Bruce M., Hebron, IL

AccuDry's moisture deviation on outgoing grain was minimal, adjusting itself even with the changes in varieties and moisture levels, and I did not have to constantly monitor dryer. The new 10950 had approximately 50% more capacity and was 30-40% more fuel efficient than previous tower dryer. Dealer's knowledge of setup and operation of system made it a very good experience.

- Jeff B., Wells, MN