

SPECIFICATIONS & CAPACITIES

MODELS ¹	E300 (E300 / E300h / E300hc)	E400 (E400 / E400h / E400hc)	E500 (E500 / E500h / E500hc)	E600 (E600 / E600h / E600hc)	E700 (E700 / E700h / E700hc)
Dryer Holding + Additional Holding = Total Holding Capacity, bu (m³)	205 + 95 = 300 (7.2 + 3.3 = 10.5)	275 + 125 = 400 (9.7 + 4.4 = 14.1)	345 + 155 = 500 (12.2 + 5.5 = 17.7)	415 + 185 = 600 (14.6 + 6.5 = 21.1)	485 + 215 = 700 (17.1 + 7.6 = 24.7)
Grain Column Thickness, (cm)	14" (35.6)	14" (35.6)	14" (35.6)	14" (35.6)	14" (35.6)
Overall Height ² / Width, (m)	15'-3" (4.6) / 7'-4" (2.2)	15'-3" (4.6) / 7'-4" (2.2)	15'-3" (4.6) / 7'-4" (2.2)	15'-3" (4.6) / 7'-4" (2.2)	15'-3" (4.6) / 7'-4" (2.2)
Grain Column / Overall Length ³ , (m)	12'-0" (3.7) / 21'-6" (6.6)	16'-0" (4.9) / 25'-6" (7.8)	20'-0" (6.1) / 31'-7" (9.6)	24'-0" (7.3) / 35'-7" (10.8)	28'-0" (8.5) / 39'-7" (12.1)
Level Auger Motor Size, HP (kW)	3 (2.2)	3 (2.2)	3 (2.2)	3 (2.2)	3 (2.2)
Unload Auger Motor Size, HP (kW)	1.5 (1.1)	1.5 (1.1)	1.5 (1.1)	1.5 (1.1)	1.5 (1.1)
Number of Fans	1 Centrifugal Fan	1 Centrifugal Fan	1 Centrifugal Fan	1 Centrifugal Fan	1 Centrifugal Fan
3-ph Fan Motor Size, HP (kW)	15 (11.2)	20 (14.9)	25 (18.6)	30 (22.4)	40 (29.8)
3-ph Electrical Full Load Amps, 208V / 230V / 460V / 575V (380V)	80 / 74 / 36 / 37 (42)	97 / 89 / 43 / 43 (52)	112 / 102 / 50 / 48 (59)	127 / 116 / 57 / 54 (68)	160 / 146 / 72 / 66 (86)
1-ph Fan Motor Size, HP (kW)	1 x 15 (11.2)	2 x 10 (7.5)	2 x 15 (14.9)	2 x 15 (14.9)	N/A
1-ph Electrical Full Load Amps, 230V	118	131	180	180	N/A
ALL-HEAT MODE	E300 / E300h	E400 / E400h	E500 / E500h	E600 / E600h	E700 / E700h
Avg / Max Operating Burner Capacity, MMBTU/hr (kW thermal) ⁴	2.92 / 3.89 (856 / 1,140)	3.89 / 5.18 (1,140 / 1,518)	4.86 / 6.48 (1,424 / 1,899)	5.83 / 7.78 (1,709 / 2,280)	6.77 / 9.02 (1,984 / 2,643)
Capacity, Shelled Corn, 20%-15% ^{5,6,7,8} wet bushels/hr (wet metric tonnes/hr) dry bushels/hr (dry metric tonnes/hr)	up to 575 (14.2) 550 (13.1)	up to 760 (18.8) 730 (17.4)	up to 945 (23.4) 910 (21.7)	up to 1,145 (28.3) 1,100 (26.3)	up to 1,330 (32.9) 1,280 (30.5)
Capacity, Shelled Corn, 25%-15% ^{5,6,7,8} wet bushels/hr (wet metric tonnes/hr) dry bushels/hr (dry metric tonnes/hr)	up to 300 (7.9) 270 (6.4)	up to 400 (10.6) 360 (8.6)	up to 495 (13.1) 445 (10.6)	up to 595 (15.7) 535 (12.8)	up to 690 (18.2) 625 (14.9)
HEAT + COOL MODE	E300 / E300hc	E400 / E400hc	E500 / E500hc	E600 / E600hc	E700 / E700hc
Avg / Max Operating Burner Capacity, MMBTU/hr (kW thermal) ⁴	1.99 / 2.65 (583 / 777)	2.65 / 3.53 (777 / 1,035)	3.24 / 4.32 (950 / 1,266)	3.89 / 5.18 (1,140 / 1,518)	4.51 / 6.02 (1,322 / 1,765)
Capacity, Shelled Corn, 20%-15% ^{5,7,8} wet bushels/hr (wet metric tonnes/hr) dry bushels/hr (dry metric tonnes/hr)	up to 330 (8.2) 310 (7.2)	up to 435 (10.8) 410 (9.6)	up to 540 (13.4) 510 (11.9)	up to 650 (16.1) 610 (14.2)	up to 755 (18.7) 710 (16.6)
Capacity, Shelled Corn, 25%-15% ^{5,7,8} wet bushels/hr (wet metric tonnes/hr) dry bushels/hr (dry metric tonnes/hr)	up to 200 (5.3) 175 (4.1)	up to 260 (6.9) 230 (5.4)	up to 330 (8.7) 290 (6.8)	up to 390 (10.3) 345 (8.0)	up to 460 (12.1) 405 (9.4)

¹ Dryer models can be configured as heat + cool or all-heat (E300, E400, E500, E600, E700), all-heat only (E300h, E400h, E500h, E600h, E700h), or heat+cool only (E300hc, E400hc, E500hc, E600hc, E700hc).
² Add 24" (61m) for a 24" dryer stand set or 36" (92m) for a 36" dryer stand set.
³ Add 1'-0" (30m) if remote cabinet is mounted to the dryer.
⁴ Operating burner capacities are based on a 150 deg F (83 deg C) temperature rise for average and 200 deg F (111 deg C) temperature rise for maximum.
⁵ Based on 220 deg F (104 deg C) heat plenum(s) temperature.
⁶ Discharging at 17% moisture.
⁷ Capacities in metric tonnes/hr are based on a grain bulk density of: 749 kg/m³ (wet @ 25% moisture), 703 kg/m³ (wet @ 20% moisture), 677 kg/m³ (dry @ 17% moisture), 661 kg/m³ (dry @ 15% moisture).
⁸ The information contained herein is intended to assist our customers in selecting the grain drying system that they believe best meets their unique preferences and needs. The performance figures and capacities presented in this document are only estimates, based on calculated simulations, and do not constitute express or implied warranties. Many factors influence the grain drying process, including ambient temperature, relative humidity, grain variety, grain quality, grain temperature, dryer operating temperatures, dryer add-ons and accessories, and dryer condition, maintenance and operation.

At Mathews Company, we continuously strive to improve our products. Accordingly, changes may occur that are not reflected in the specifications and capacities contained in this brochure.

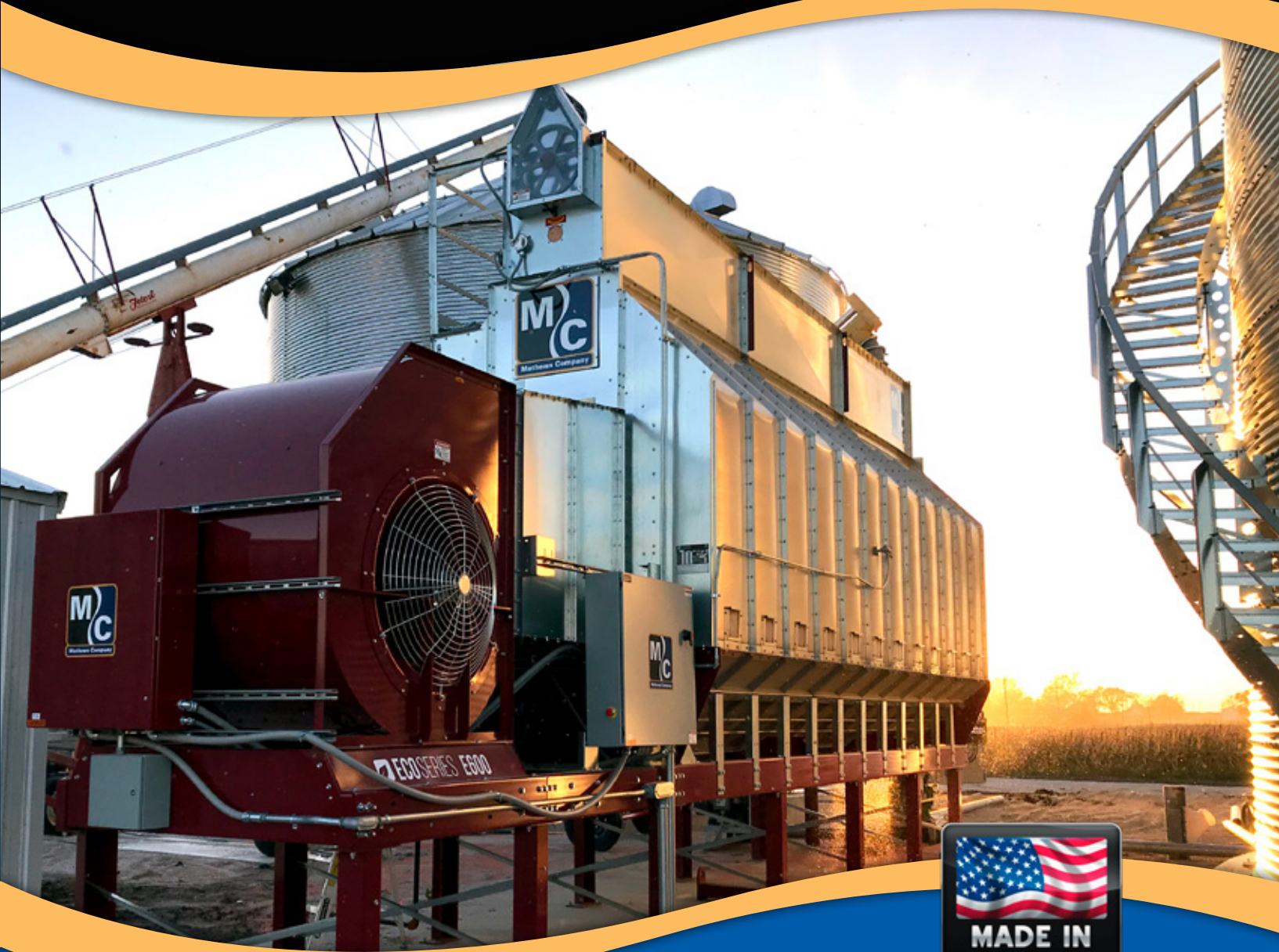
Your Authorized M-C Dealer is:



Mathews Company
www.mathewscompany.com
Crystal Lake, IL
phone: 1-815-459-2210
fax: 1-815-459-5889
email: mcsales@mathewscompany.com



ECO SERIES
LOW PROFILE
DRYERS



GRAIN DRYER SPECIALISTS



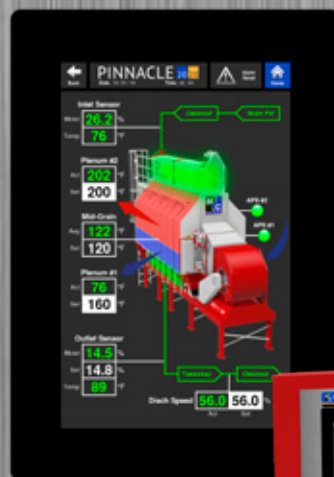
ECOSERIES

Innovation • Expertise • Quality

PINNACLE 2020 CONTROL SYSTEM

Experience the ease of dual touch screens with Pinnacle 20|20

- PLC-Based Dryer Control System
- Dual 10" (25.4 cm) HD Touchscreens
- Easy User Interface
- 24 VDC Control Safety Circuit

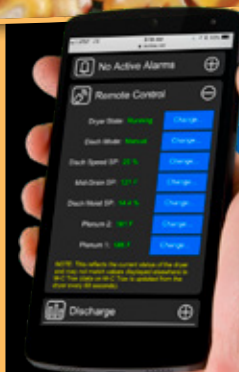


Quick Glance

- Easier to Navigate
- Bright, Easy to See Graphics
- More Info Available Just 2 Screen Touches Away
- Better Diagnostics

MANUAL CONTROL SYSTEM

Want the simplest system available? M-C offers a manual control system without all the bells and whistles of Pinnacle 20|20. Ask your dealer for more information.



M-C Trax
Remote Control

Control Your Dryer from Anywhere in the World!

First Year is Free!

After the first free year, if you are not happy with M-C Trax for any reason, cancel your subscription moving forward free of charge.

Made Easy

M-C Trax setup does not require any network configuration or software. The only requirement is that a wired internet connection is available at the dryer.

High Quality, Affordably Priced

ECO Series models are available to dry grain with your choice of heat and cool models or all-heat only models. With its 15'-3" (4.6 m) overall height, the ECO Series fits easily into those installations with height restrictions. The technologically advanced design allows for increased holding capacity and maximum airflow for the highest-quality dried grain. Efficient and affordable, this profile dryer offers a great value on a quality product.

High Efficiency Burner(s) featuring stainless steel construction with cast aluminum manifold features high efficiency, low emission operation. Heat and Cool models have two burners, and All-Heat models have one burner.

Quiet Drying with a single, centrifugal belt-driven fan reduces noise, while producing maximum airflow.

Long Lasting Screens are available in stainless steel, aluminum or galvanized and in multiple sizes for different types of grain drying.

14" (35.6 cm) Grain Columns provide maximum holding capacity.

Full Length Level Auger works with a motorized grain level control bindicator, for positive, reliable grain flow into the dryer.

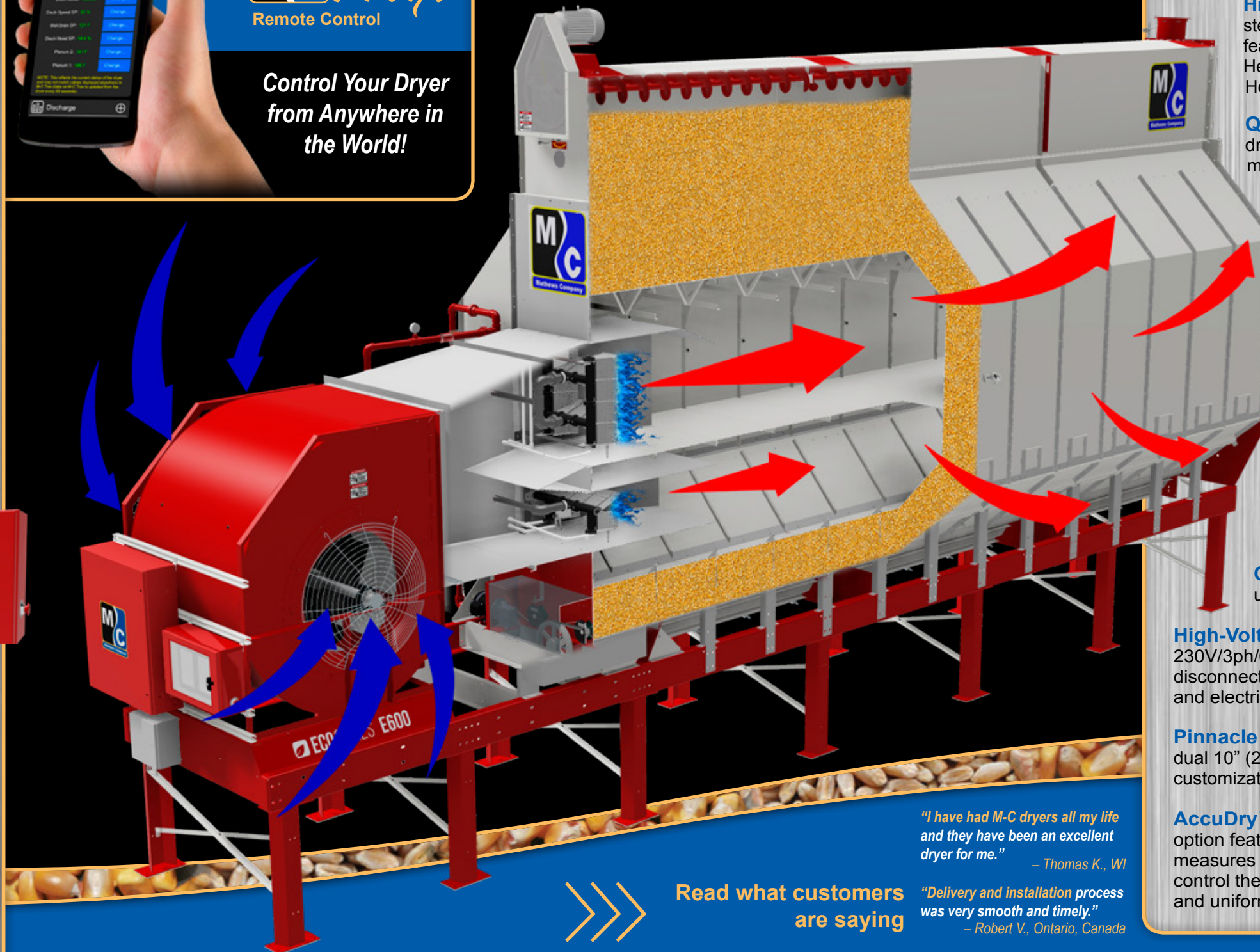
Large, Enclosed Wet Grain Hopper keeps the inside environment clean and the drying columns full, requiring fewer filling cycles.

Quick Drain Ports allow for easy, fast unloading, if necessary.

High-Voltage Electrical System with a NEMA rated, 230V/3ph/60Hz high-voltage cabinet, with main power disconnect, protects motor starters, thermal overloads, and electrical components from weather and dirt.

Pinnacle 20|20 Control System featuring intuitive, dual 10" (25.4 cm) HD touchscreens for ultimate control, customization, and a built-in backup.

AccuDry™ Moisture-Based Control is an available option featuring DryerMaster™ technology which measures incoming and discharged grain moisture to control the discharge rate of the dryer, ensuring precise and uniform grain moisture.



Read what customers are saying

"I have had M-C dryers all my life and they have been an excellent dryer for me."
— Thomas K., WI

"Delivery and installation process was very smooth and timely."
— Robert V., Ontario, Canada